

# *Classic City Curl*

The Newsletter of the  
**Classic City Wood Turners Club**

May 2005

[Jim Underwood](#), Editor

---

## May Meeting

The May Meeting will be held on the last Monday of May, the 30<sup>th</sup> (Memorial Day), at Coleman Cabinets, 6:00 – 9:00 PM. There will be a demonstration on turning wooden eggs at this meeting. Michael Hollis will be our demonstrator.

To be raffled off this meeting is a nice Cherry burl that Jim Talley prepared in the demonstration at our last meeting. Also Lou Kudon will be bringing a gouge sharpening jig, and Jim will be bringing some tools for the raffle as well. Bring your money, your raffle items, and your luck. We've nearly enough money to start paying for some out of town demonstrators, so let's keep up the raffles and the contributions.

Dues are overdue. They are \$25/person or \$30/couple. If you have not done so, please give them to Lou Kudon this next meeting.

---

## Last Meeting

We had a good turnout for the April meeting. We had thirteen in attendance including a couple of newcomers. Thanks to all who came and please come again this month. Hopefully we'll see a couple of our regulars that we've missed the last couple of meetings.

We have started a library. If you have issues of turning magazines or books you'd like to donate, please bring them and share. With the advent of a library we also need a librarian. Dr. Bob Nix has consented to be temporary librarian and Coleman Cabinets is storing them so far. Please consider doing this as a help to the club.

Joe Gilvey contributed a Craft Production Log Sheet handout. I had not thought of it, but it is a very good idea to keep track of the things you make in your shop. This way you can tell what you have on hand, when you made it, and have general idea of your production. Thank you for this tip Joe.

Raffled off in the April meeting were some natural Hawthorne blanks, Birds-eye Maple boards, 2 inch Cherry blanks, Teak, Maple, and Cherry pen blanks, Magnolia bowl blanks, Cherry bowl blanks, Dogwood bowl blanks and a Camphor bowl blank. Hmmm... sounds like we should see some bowls at the next meeting. Please bring

your raffle items next meeting. These are what will fund our demonstrations in the near future. We're hoping to bring some 'name brand' turners in at some point. We would at least like to pay for a meal and gas money for some out of town turners.

---

## Demonstration

Our demonstration last month was very informative. Jim Talley showed us several things about harvesting the raw tree and showed us how to cut it in preparation for turning.



Jim gave us a good rule of thumb for choosing wood for turning. Usually anything that bears fruit, flowers, or nuts, is good for turning. Woods mentioned were; Dogwood, Camphor, Cherry, Hackberry, Oak, Pecan, and Persimmon. The best times of year for harvesting trees are in the fall or winter. I assume that this is because the sap is not running, and hence not near the drying problems. Otherwise the time to harvest the tree is when it's down.

Here Jim shows us his technique of dulling his newly sharpened chainsaw blade on pallet nails... Oh. I mean, he's cutting this Magnolia log in half lengthwise, which essentially begins the preparation. You must first ensure that your log is chocked in such a manner so as not to move, or roll. The slats on the pallet help prevent rolling, hence the pallet. One should also try to find a natural crack upon which you would base this cut. The pith could also be removed in this step as well. The pith being the center of the tree is where most of the moisture will accumulate. Much depends upon the species, time of year, and size of the log, but this extra moisture can be the cause of checking and warping as it quickly dries. Jim tells me that he normally skips this step as cutting it in the center usually prevents a lot of this.



Here are both halves newly cut. At this point you would take a closer look at the inside to determine any points of interest in the wood. You can see the dark spots in this photo which is where a branch started, which should provide some interesting figure in these two blanks.



This is one of the blanks from above. Notice that much has been cut away and the corners dogged off. Also there is now a flat spot there amidst the bark for a live center to get a good bite in. If the bark were left on, then the center would have a tendency to slip in the bark, and perhaps sling the blank. None of us want to know what that is like.



Here is a small Cherry blank next to some circle templates. The awl is pinning the correct size template to the bowl blank. Not shown is the next step, which would be to chalk an outline for a sawing guide.



This is the final step before rough turning. This is where you would follow the chalk outline of the circle template above. One could also fabricate a circle cutting jig for this task as well. I've used one quite successfully on a special project I'll share at the next meeting. If you construct this jig in a certain manner you should not have to notch the work in order to get the cut started.

One should be very careful when sawing the blank on the bandsaw. Note the careful hand positioning in this photo. Never direct your fingers toward or near the blade. If you cannot avoid this maneuver use a push stick. We do not want

you to learn this the hard way.

Once you have prepared your blank you can either store it or rough turn it. Either way you should take care that the blank does not dry too quickly nor stay wet.

If the blank is unturned you can paint the exposed wood with Latex paint, Anchor Seal wax, or wrap in newspaper, or even bury it in sawdust. This will allow a good slow drying process which should prevent the disastrous cracking that my Ornamental Plum is doing right now on my shop floor... shame on me! You can also treat it with PEG, (Poly Ethylene Glycol) but we're told that it is difficult to get a good finish after that treatment. Whatever you do, do not use plastic unless you want your wood to rot and mold in short order. Someone reported that one Woodturner seen at the Southern States Symposium does store his stuff in plastic (probably open at one end). I believe this turner lives in Arizona, which is extremely dry, so in that climate it probably works fine. Here in Georgia we have high humidity, and I for one don't recommend it, unless you're turning it within a day or so.

If you turn the blank green, much of the moisture will be spun out of the blank by centrifugal force. You will want to turn the blank down close to one inch in thickness. A cabinet maker that Jim knows says that anything two

inches or thicker, will always remain somewhat wet in a natural drying process. The ideal rough thickness depends on the size of the blank, how wet it is, and what species. You can even find tables on this information, but I am unsure where. Once you've roughed it out, store the blank in newspaper or in a paper sack and in a few months it should be ready for the final turning.

This was a very educational and helpful demonstration. A big thanks to Jim Talley and others for sharing this information with us. If you have some demonstrations you'd like to see please don't hesitate to email me and I'll forward these ideas to Jim Talley or Lou Kudon.

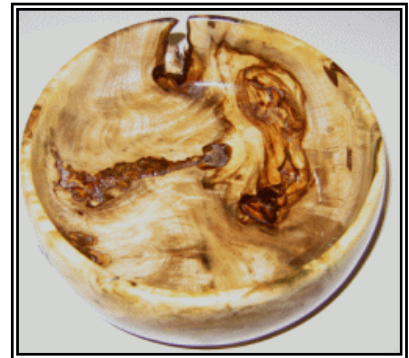
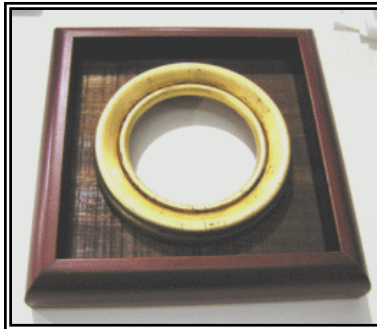
---

## Turners Showcase

Once again I've enjoyed seeing what our members have been up to.



Dr. Bob Nix showed us these delightful and money making turned frames.



This was a Holly Burl bowl that Lou almost gave up on. I really liked it. Very interesting bowl.



Michael Hollis made this natural Oak bowl. The wooden eggs were made of Magnolia, Chestnut and other wood.



Lou Kudon turned these pens. The top pen is made from Lacewood. The center one is made of Ash and Walnut. And the bottom pen was made of that exotic wood, Rosemary. I was intrigued. Did you harvest the Rosemary out of your own herb garden Lou?



Lou also made this pretty top made of Walnut Cherry and Maple.

Again thanks to all who shared their creativity and projects with us.

*Photographs courtesy of Sheldon Washington*

---

## Upcoming Shows

This is a short list of shows coming this year:

AAW National Symposium July 22-24 Overland Park, KS  
 Featured turners: (too numerous to mention)

GAW Turning Southern Style XI September 16-18 Unicoi State Park, GA  
 Featured turners: Christian Burchard, Rex Burningham, and Don Duden

---

## AAW Membership

I strongly encourage our members to join the [American Association of Woodturners](#). They publish the American Woodturner journal four times per year. AAW has an Annual Symposium featuring many renowned turners. Educational Opportunity Grants are also awarded to assist members in their education and teaching. Local chapters may also receive grants for demonstrations. AAW also publishes other resources as well. A membership also protects our members in case of accidents as this association carries insurance on members. It's only \$35 per year for individual membership.

Jim Talley and I are looking into CCWT becoming a Charter Club of AAW. This move will insure our officers but not members. I still encourage you to become a member as outlined above.

---

## Classified Ads

### **For Sale:**

---

- Kellogg 2 Hp 2 Stage Compressor (rebuilt) - \$400
- Milwaukee/Delta 14" Radial Arm Saw - \$400
- Delta Lathe Duplicator - \$75
- Kreg Manual Pocket Hole Jigs - \$75
- Leigh 24" Mortise and Tenon Attachment for Leigh 24" Dovetail Jig - \$75
- Leigh 15" Dovetail Jigs - \$50
- 2 Chain Saws - \$30 ea
- 2 Gas Water Heaters - \$20 ea
- Makita 12V Battery Charger - \$15
- Sawblades 10 in carbide tip - \$10
- Assorted Clamps

Call Bob Bitsko  
 Ph 706-769-7520

---

- 30 x 40 desk made 5/24/74 \$50
- 46-700 Delta Lathe \$300
- 1939 Atlas lathe for conversion to wood lathe \$100
- Craftsman table saw \$100

- 1940 Leblond lathe I took apart to move it! Big and heavy \$500
- Faceplates made by myself \$40. each (\$30 -\$35 for members)
- Vise for milling machine \$50
- Many tools and accessories
- Computer and printer used three months for school course \$600
- Much more

Need the space Sell or trade. Call Alan Treadwell at 678-234-0367 [alantreadwell@alltel.net](mailto:alantreadwell@alltel.net)

---

### **Wanted:**

- Inexpensive Band Saw for light use; must have rip fence.

Please Call Jay at 769-5036

---

### **Miscellaneous:**

- Magnolia tree down, still some left, call Jim Talley - 706-353-7675
- For those of you who are looking to buy or sell things, the AAW has these [classified ads](#).
- Bob Bitsko mentioned that Peachstate Lumber had Massar Birch turning blanks, and Carlton McLendon Inc. had some Cocobolo squares for about \$35.00, and some Claro Walnut veneer cores. This is old information so this may be inaccurate at this point. You'll need to check with these vendors to verify.

You can also purchase exotic woods from:

- [Atlanta Wood Products](#)
  - [Carlton McLendon Inc.](#)
  - [Peachstate Lumber](#)
- 

### **Newsletter copy**

If you have ideas of articles you'd like to see in the newsletter, or would like to submit an article please email [Jim Underwood](#). I would like reports of schools or shows you attend, reviews of tools you own or make, demonstrations you'd like to see or any other ideas you might have.

I've heard some of you didn't get the embedded pictures and some of you got extra attachments. Please bring these things to my attention and I'll do my best to get it sorted out.

If you would like to unsubscribe from this newsletter please [email](#) me.

---